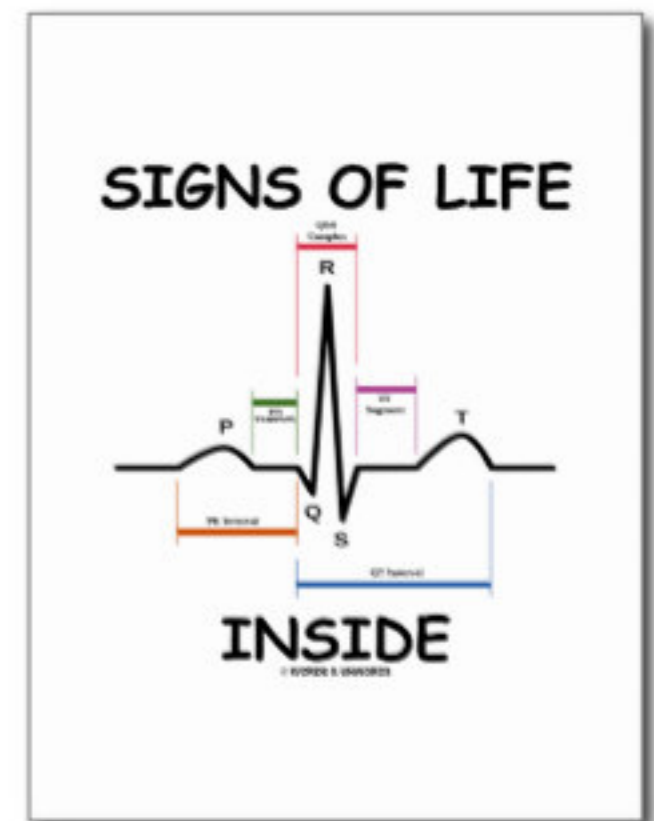


ΤΕΙ ΑΜΘ
ΤΜΗΜΑ: Ηλεκτρολόγων Μηχανικών

Εμβιομηχανική



Ηλεκτροκαρδιογράφος

ΗΚΓ

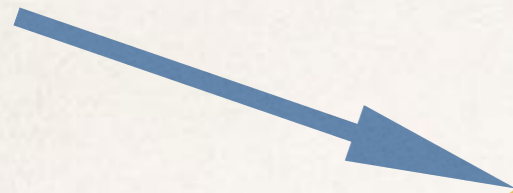
Νίκος Βορδός

Κύτταρο :

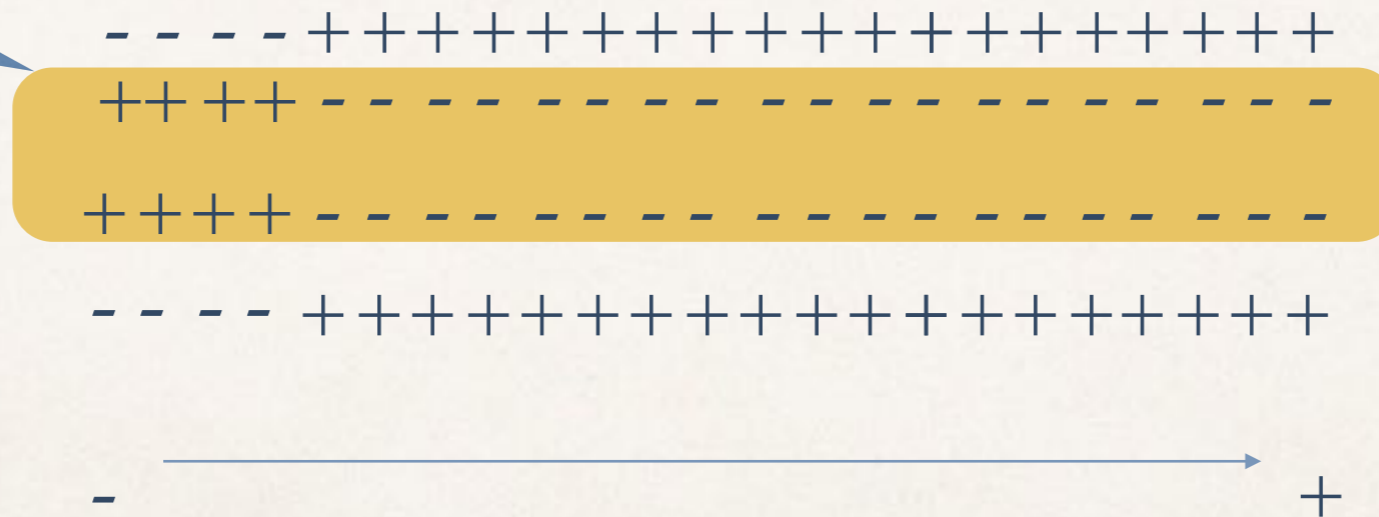
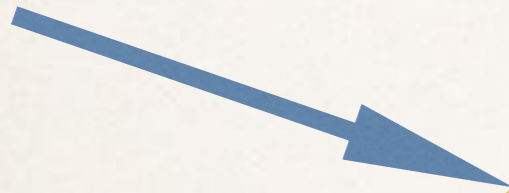
Το μικρότερο δομικό συστατικό της έμβιας ύλης

Κυτταρική Διπλοστοιβάδα

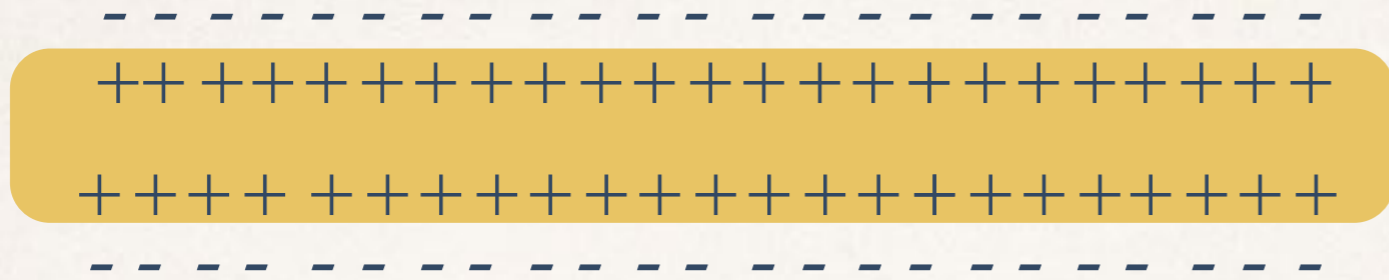
Μεμβράνη



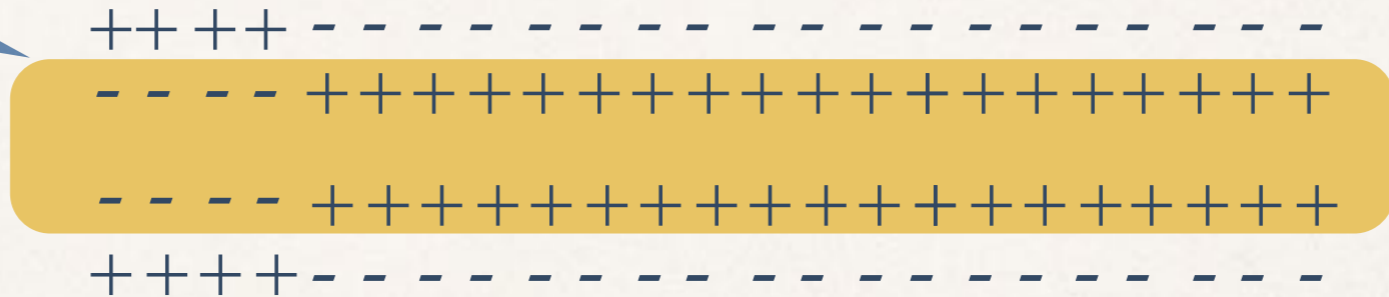
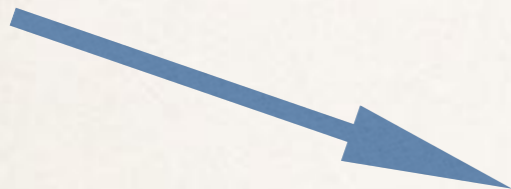
Διέγερση



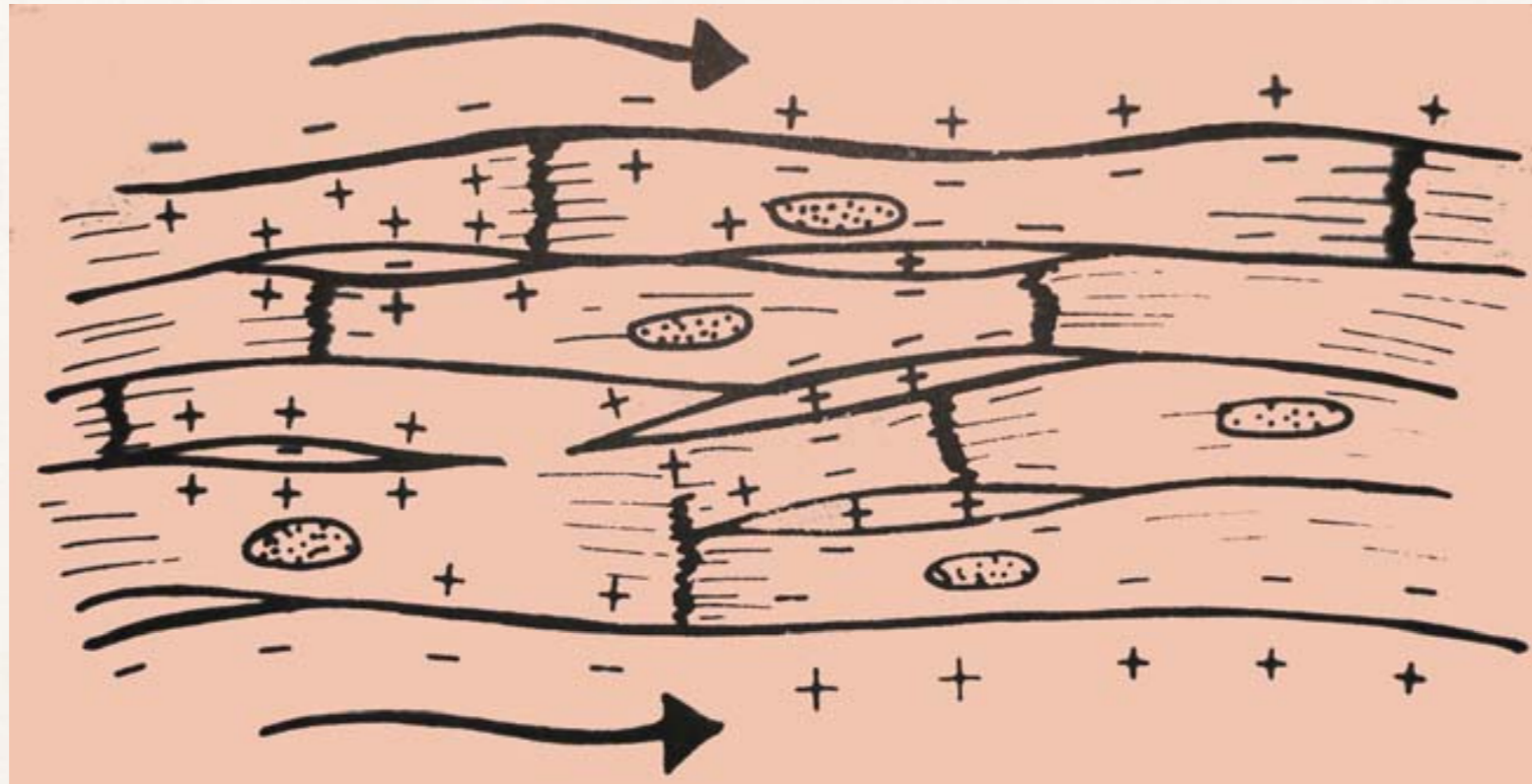
Ηλεκτρικό Δίπολο

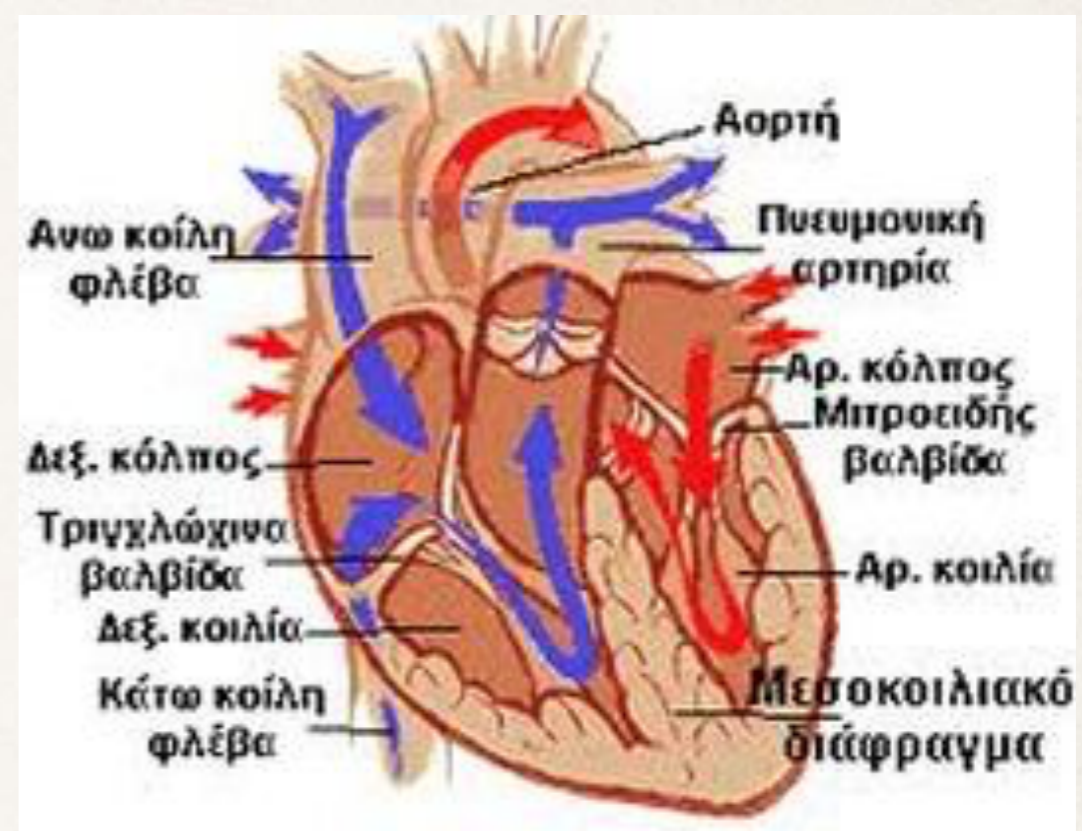
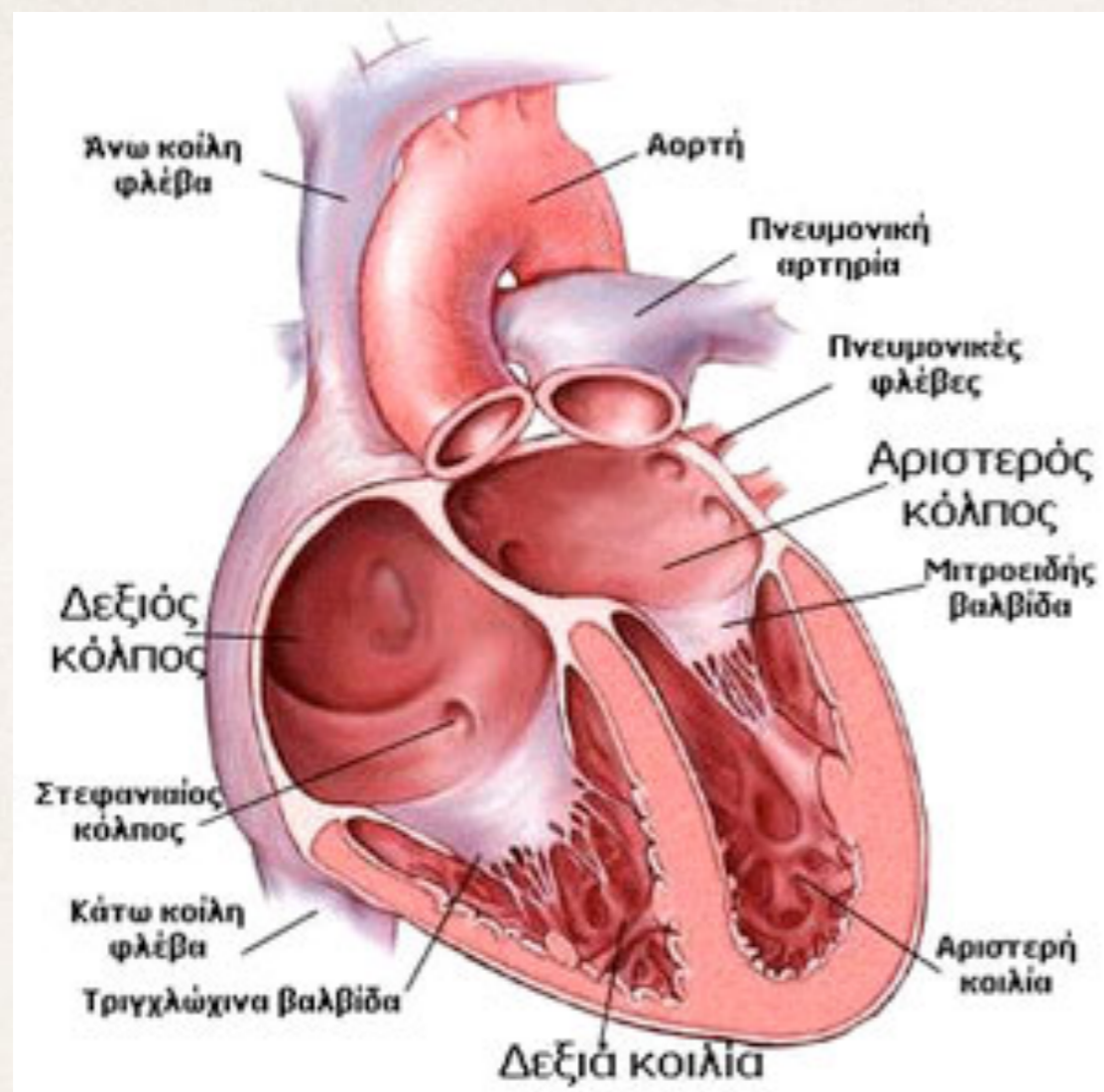


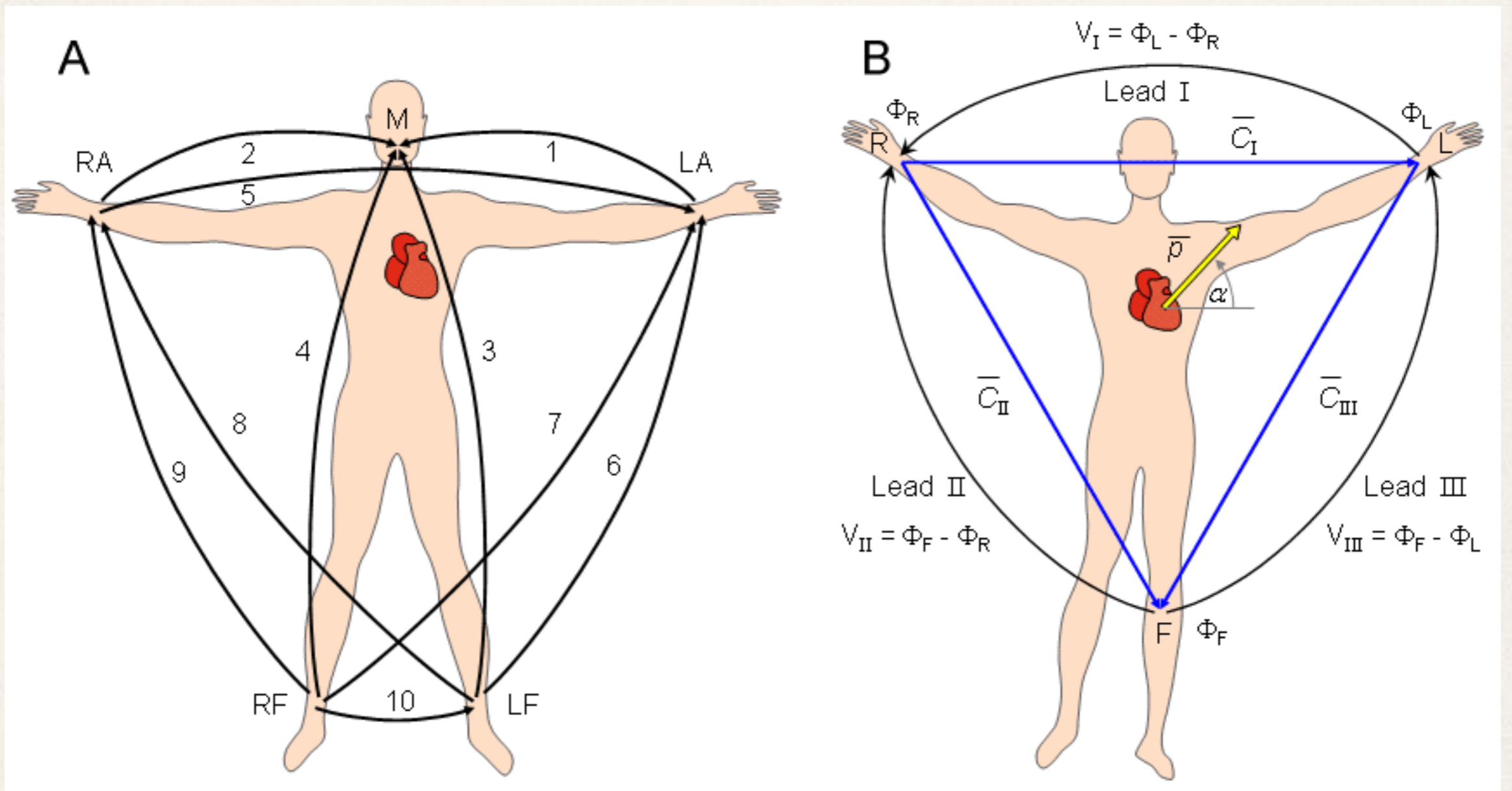
Επαναπόλωση



Μυοκαρδιακό Δίπολο

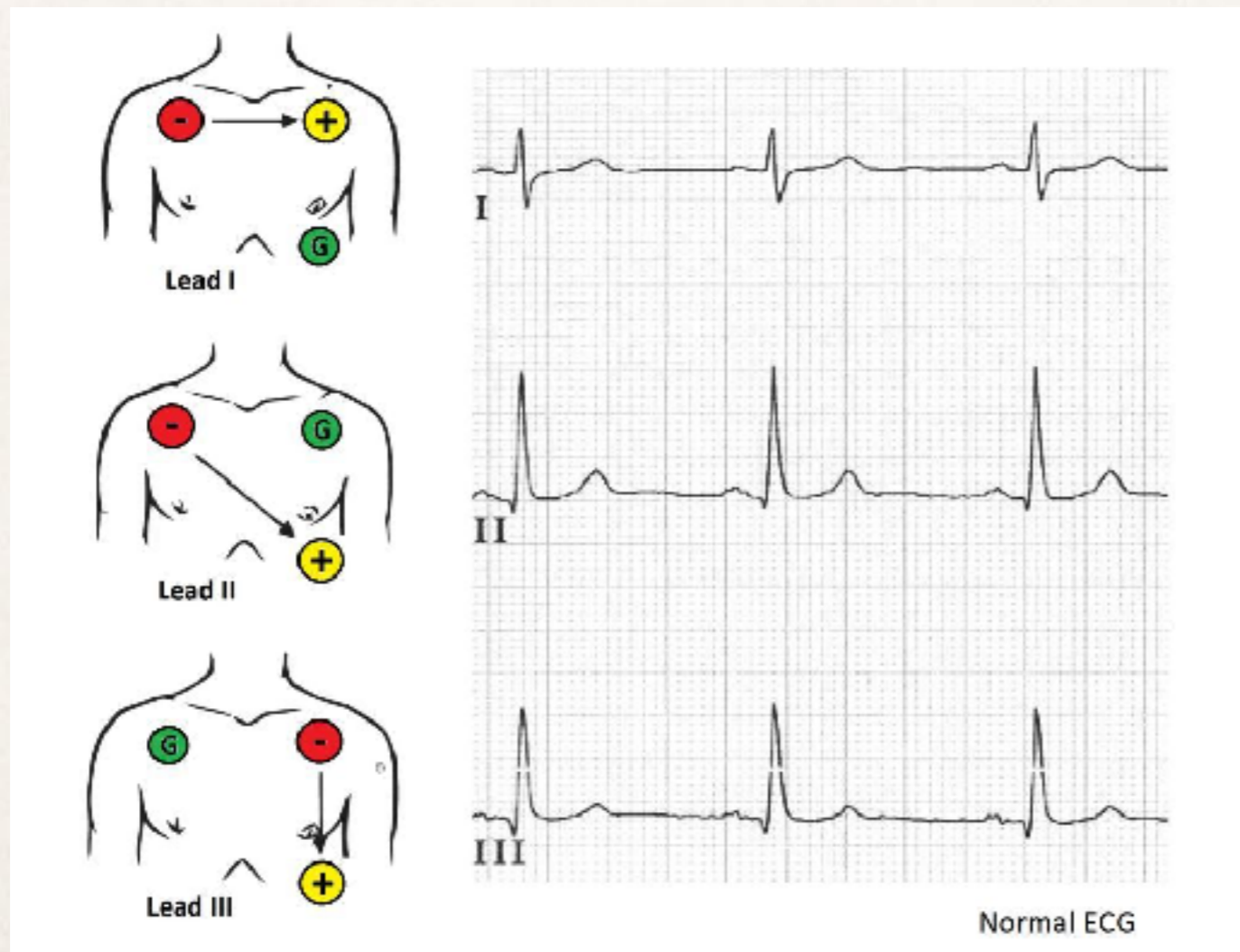






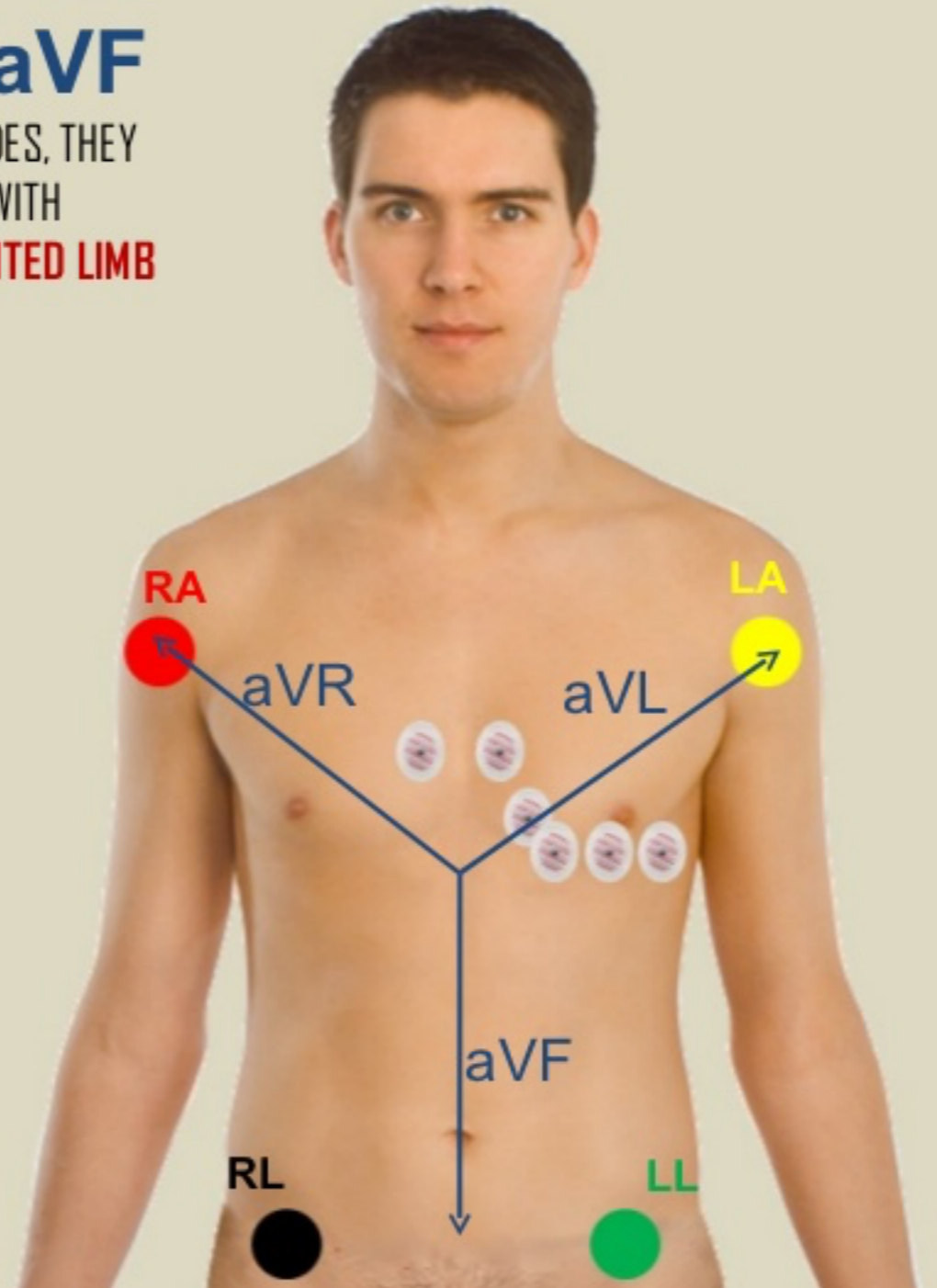
Ηλεκτροκαρδιογραφικές Απαγωγές

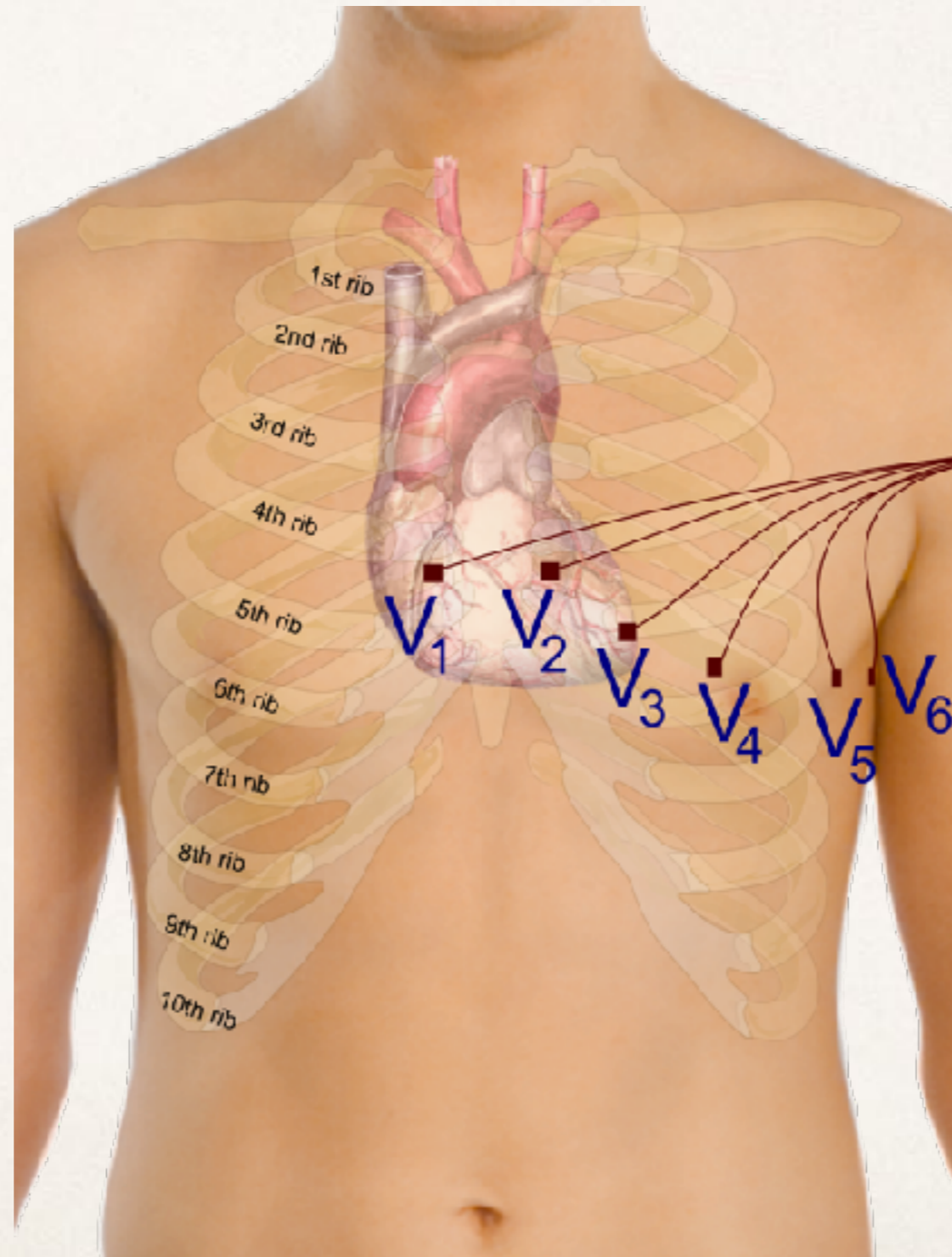
Κλασσικές Διπολικές (I,II,III)
Αυξημένες Μονοπολικές Άκρων (aVR, aVL, aVF)
Προκάρδιες Απαγωγές (V1,....., V6)

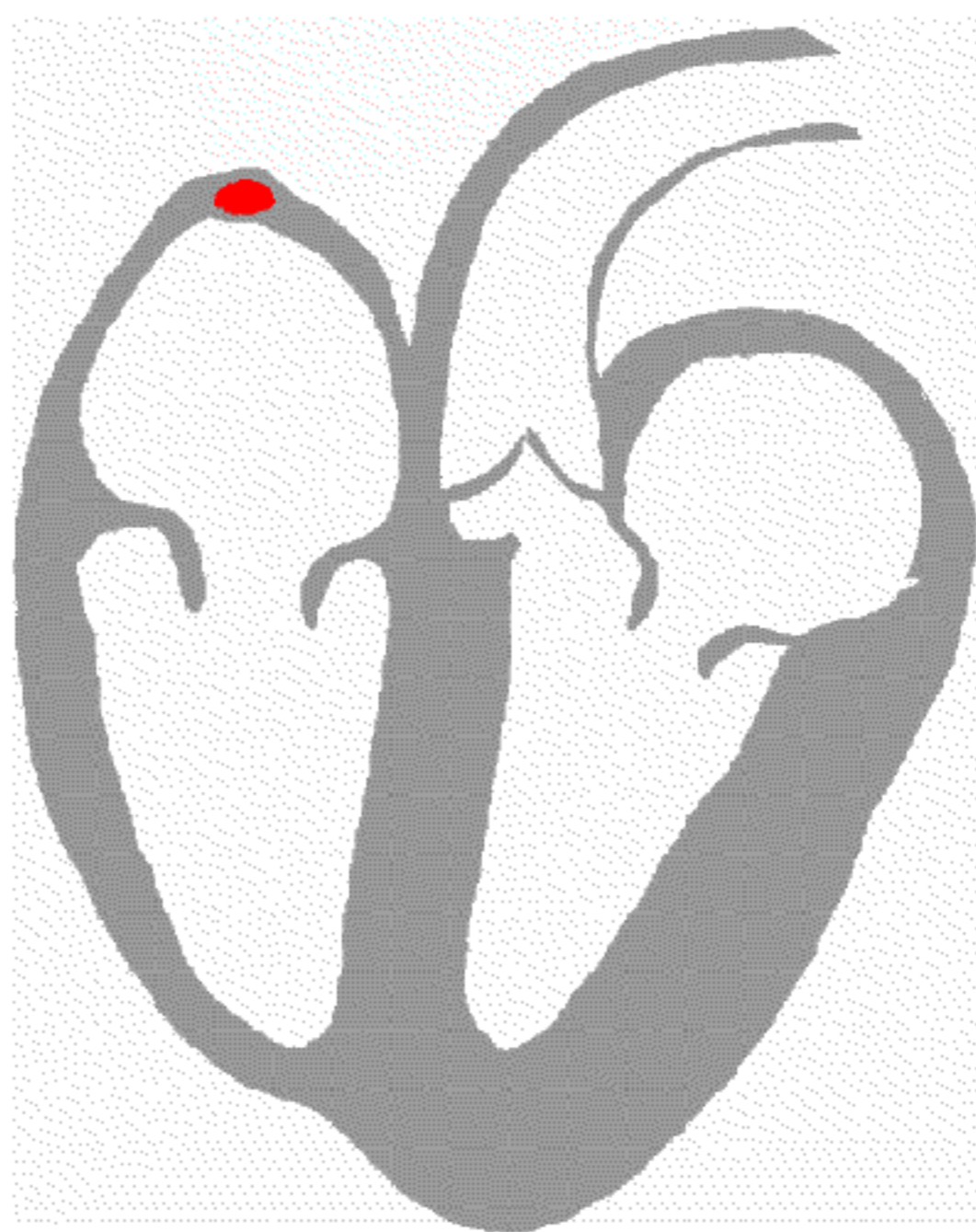


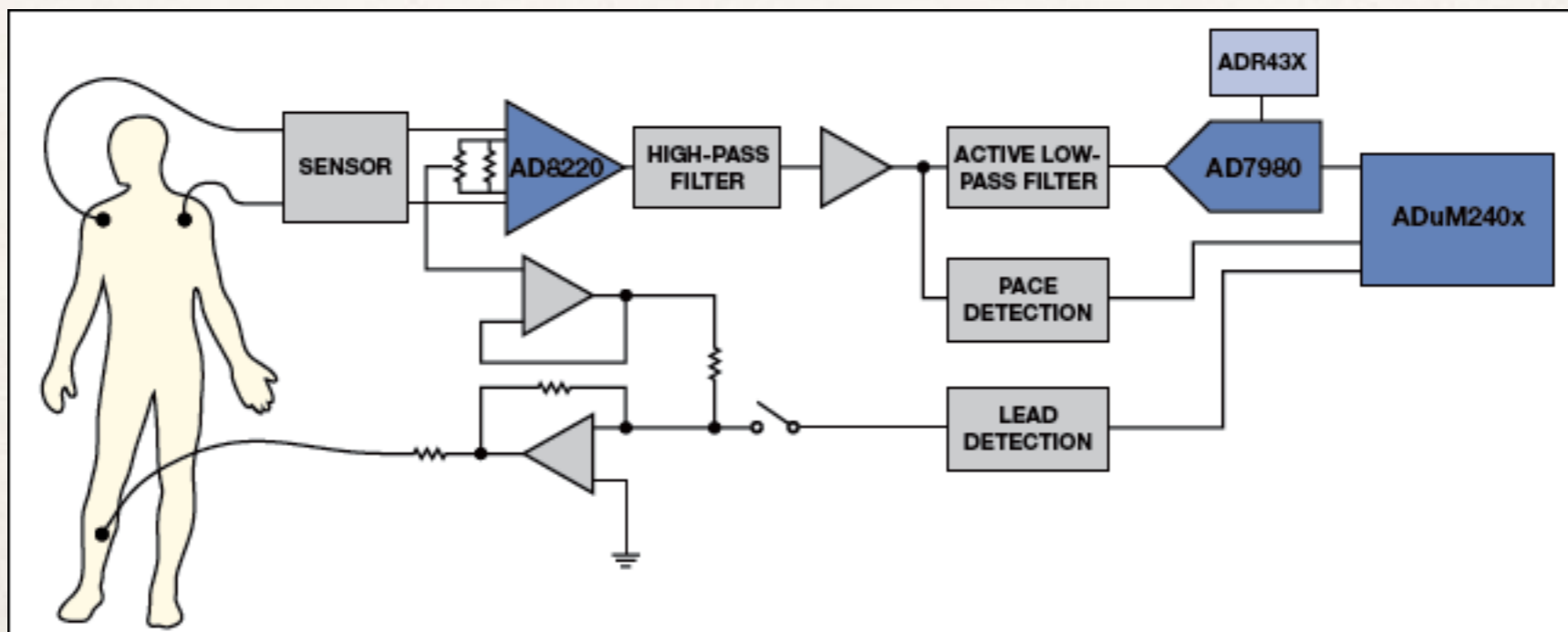
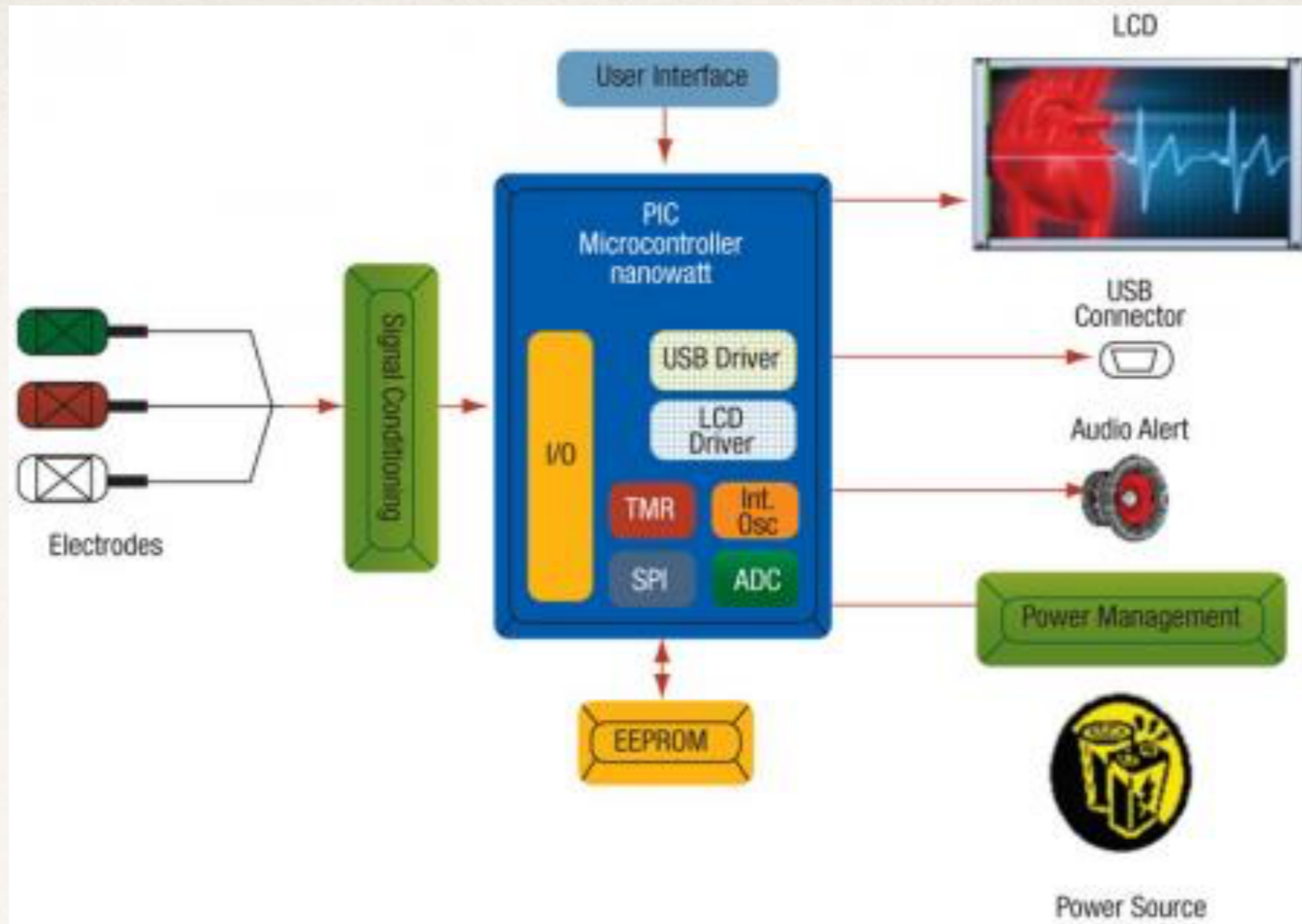
LEADS aVR, aVL, aVF

THEY ARE ALSO DERIVED FROM THE LIMB ELECTRODES, THEY MEASURE THE ELECTRIC POTENTIAL AT ONE POINT WITH RESPECT TO A NULL POINT. THEY ARE THE **AUGMENTED LIMB LEADS**

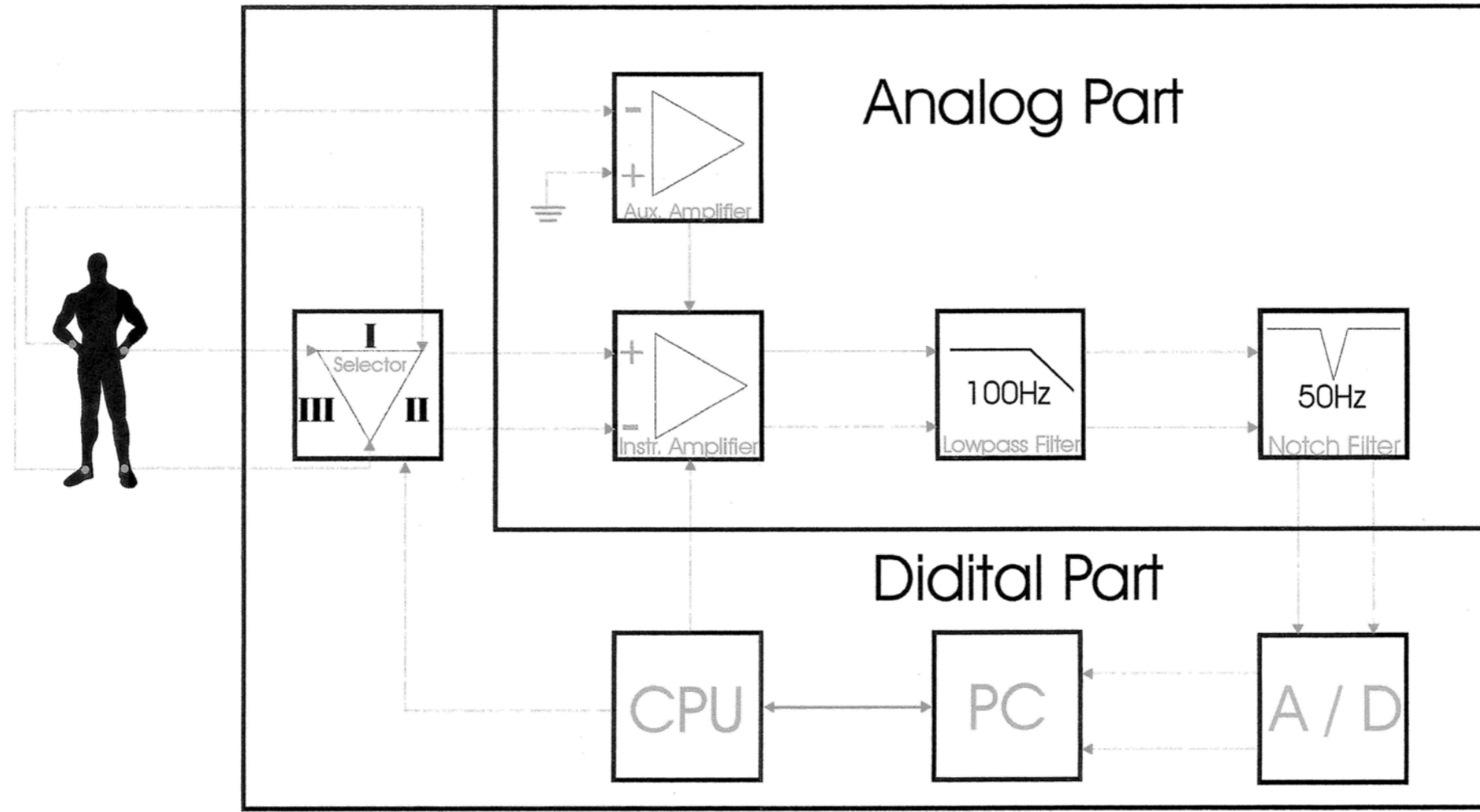


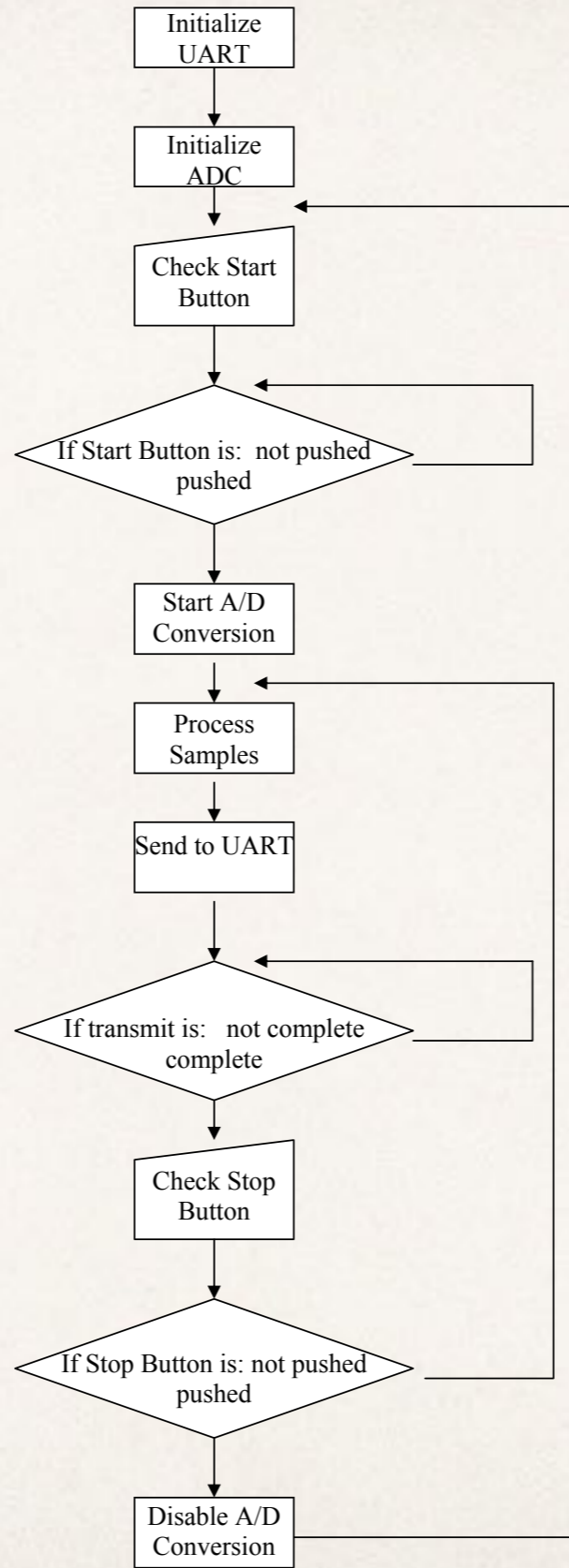






ΔΟΜΙΚΟ ΔΙΑΓΡΑΜΜΑ ΨΗΦΙΑΚΟΥ ΗΛΕΚΤΡΟΚΑΡΔΙΟΓΡΑΦΟΥ







Καλήμερα !!!!!